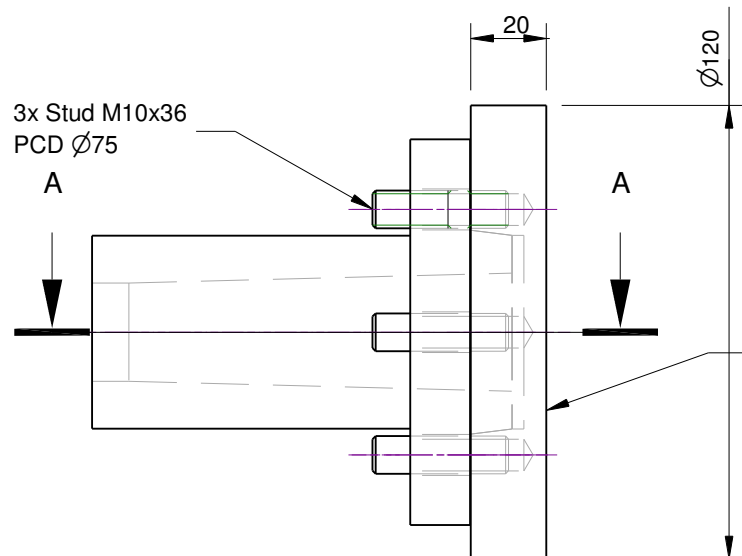


Bezeichnung: Spindel Emco Super 11 DIN 55021 Size 3

Material: Steel, heat treated

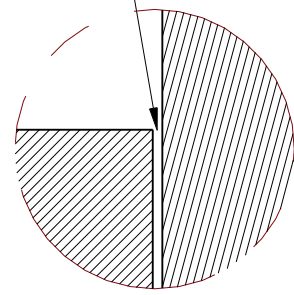
Stefan Gotteswinter  
www.gtwr.de



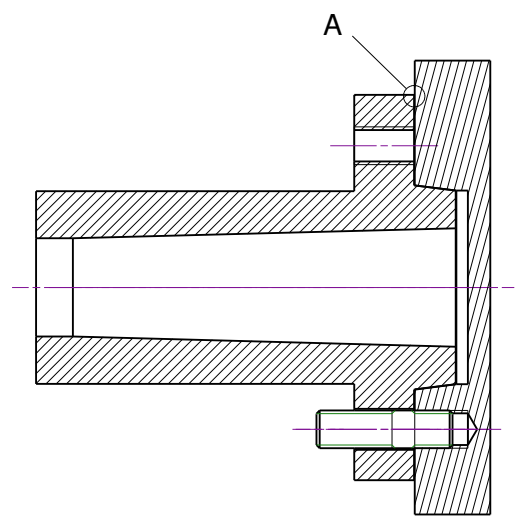
Machine matching to chuck

0,01-0,02mm gap between the face of the spindle and the backplate when the nuts are not tightened.

Full contact between the spindle face and the backplate must be given, when the nuts are torqued correctly.



Detail A



Section A-A

Bezeichnung: Emco Super 11 Backplate					
Material: GG25 / GGG40					
Stefan Gotteswinter www.gtwr.de					
					2 von 2