

Description:

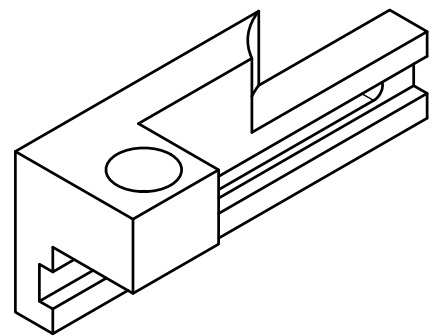
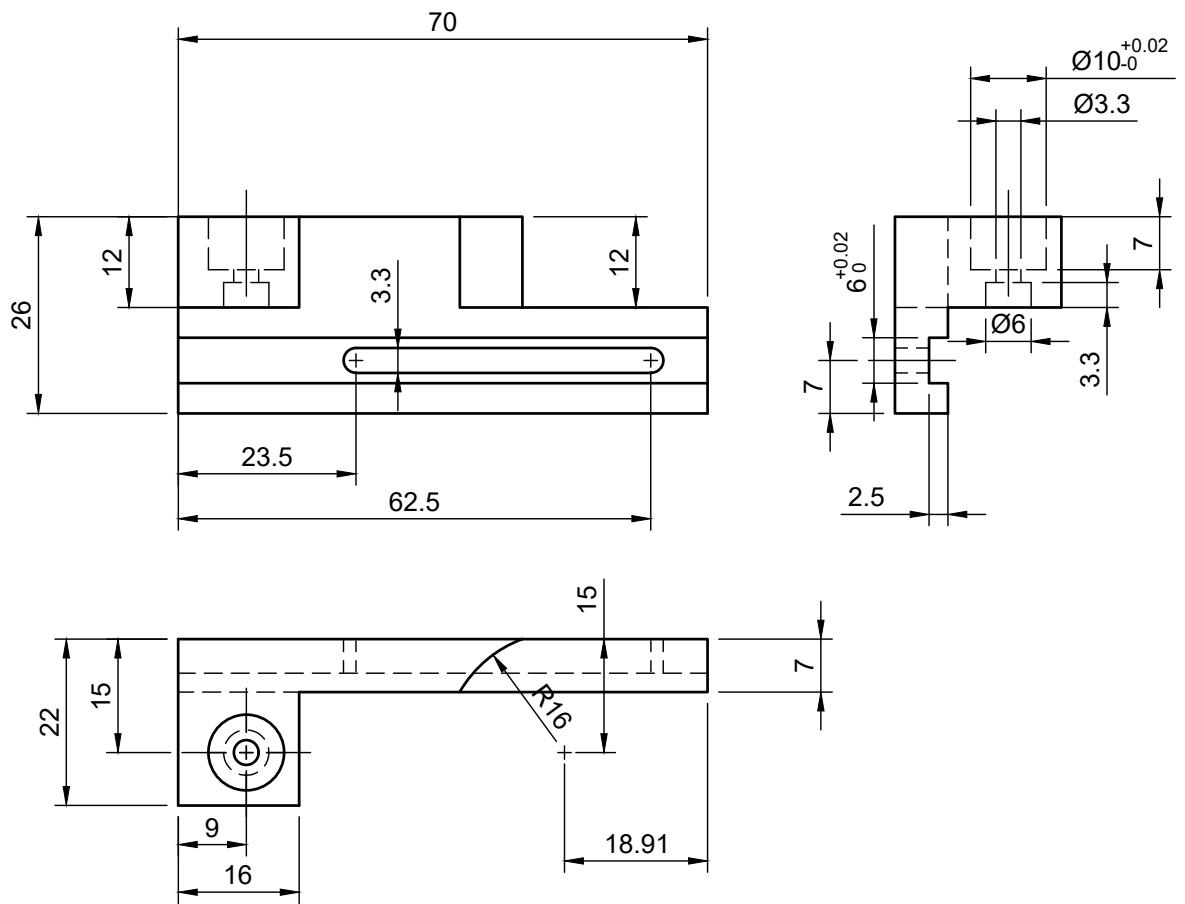
Low profile holder for a dial test indicator (Mahr 800SM) to locate bores, bosses and edges of workpieces on milling machines.

Can also be used on lathes to dial in drills and live tools, but sag due to gravitation has to be taken into consideration.

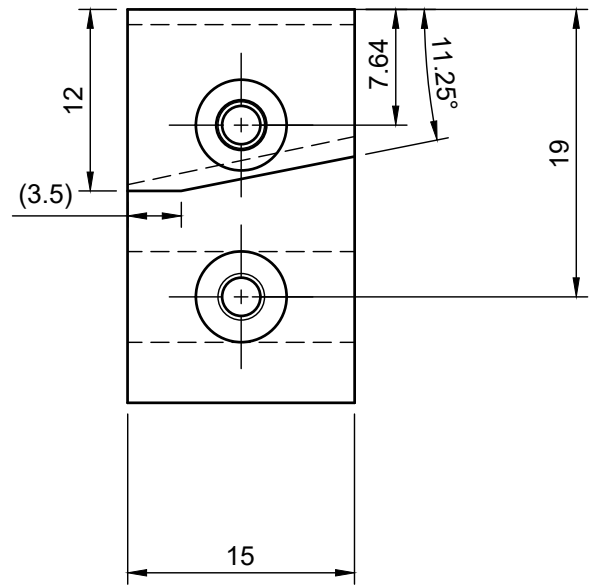
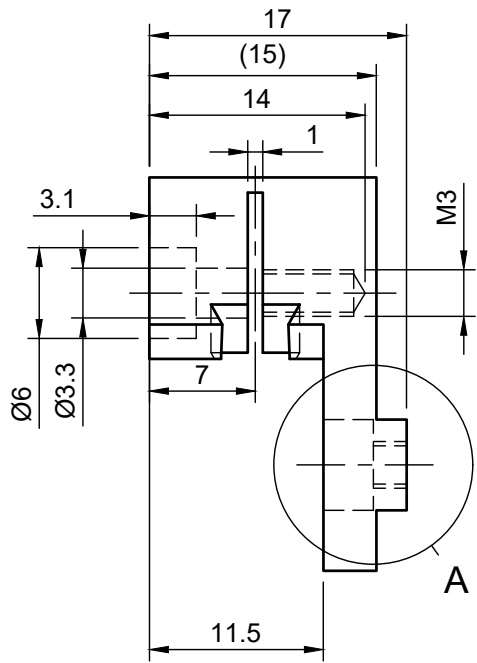
As a special feature the shank is designed to be an excentric, to allow the shank to be adjusted to be in line with the tip of the dial test indicator.

This allows the indicating of very small bores, even with dial test indicators that have the tip slightly off center.

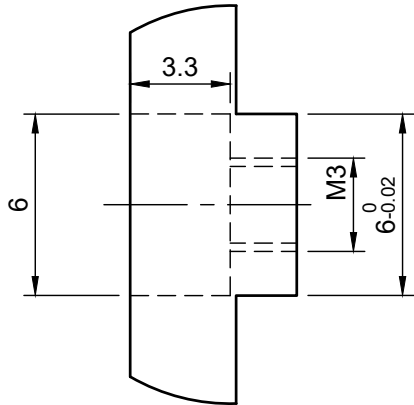
Dept.	Technical reference	Created by Stefan Gotteswinter 14.10.2023	Approved by		
		Document type	Document status		
		Title DTI Holder	DWG No.		
		Rev.	Date of issue	Sheet 1/4	



Dept.	Technical reference	Created by Stefan Gotteswinter 14.10.2023	Approved by	
		Document type	Document status	
		Title Body	DWG No.	
		Rev.	Date of issue	Sheet 2/4

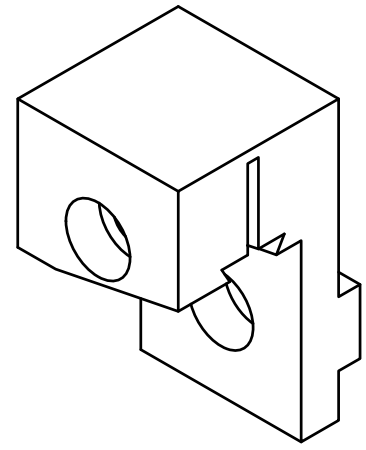


A (4:1)

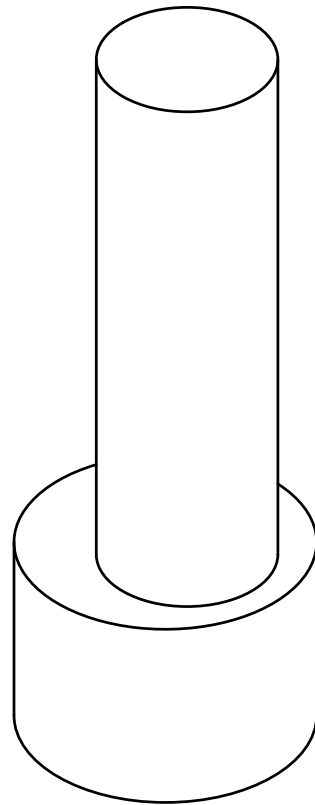
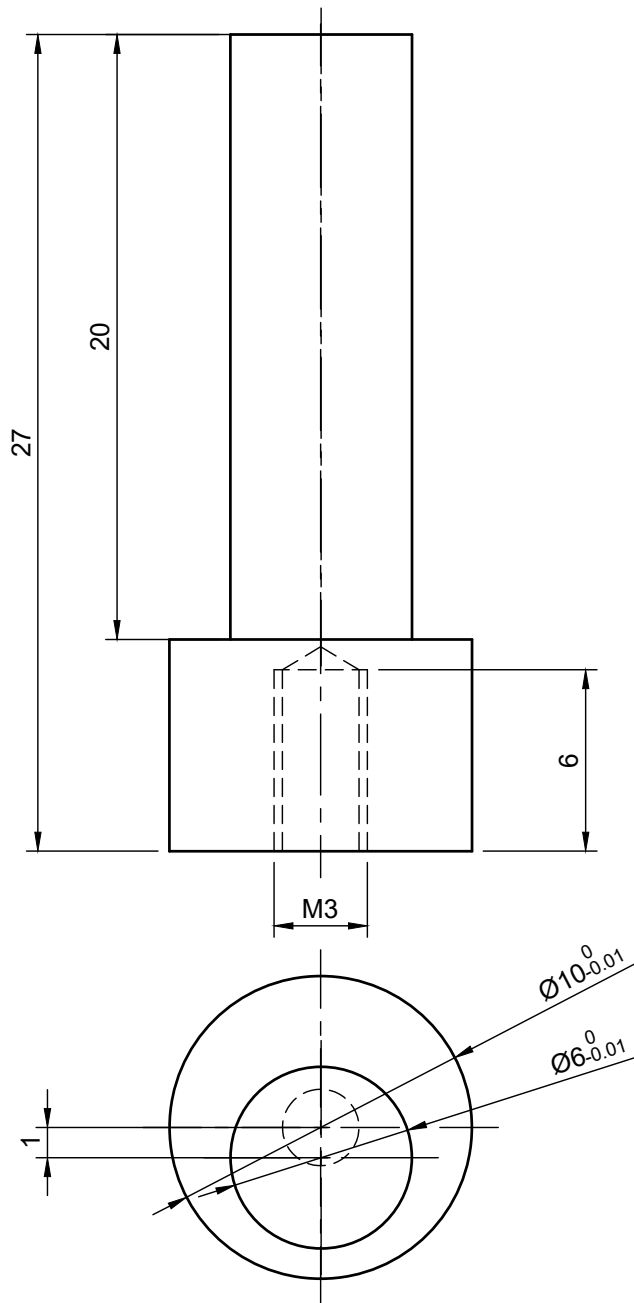


Machine the dovetail matching to your DTI.
 Rough the slot to 4mm width, widen with
 a 60° dovetailcutter until the DTI is a close fit.

Depending on which DTI you use, you might
 also have to adjust the 11.25° angle of the
 clamp.



Dept.	Technical reference	Created by Stefan Gotteswinter 14.10.2023	Approved by	
		Document type	Document status	
		Title DTI Clamp	DWG No.	
		Rev.	Date of issue	Sheet 3/4



$\varnothing 6$ can be adjusted for your preferred toolholder/collet

Dept.	Technical reference	Created by Stefan Gotteswinter 24.09.2023	Approved by	
		Document type	Document status	
		Title Shank	DWG No.	
		Rev.	Date of issue	Sheet 4/4